



**David Vu & Brigitte Obregon  
Brokers**

**RE/MAX Ultimate Realty Inc., Brokerage**  
**Cell: 416-258-8493      Cell: 416-371-3116**

**Fax: 416-352-7710**

**Email: [info@gta-homes.com](mailto:info@gta-homes.com)**

**[WWW.GTA-HOMES.COM](http://WWW.GTA-HOMES.COM)**

*Signature Terrace Collection*

COMMANDING VIEWS, UNFILTERED VISTAS, UNCOMPROMISED LIVING. THE SIGNATURE TERRACE COLLECTION OFFERS YOU A LIVING ENVIRONMENT THAT'S ONE WITH NATURE.  
EXPANSIVE TERRACE RETREATS EMBRACE THE OUTDOORS, PROVIDING YOU WITH A PRIVATE REFUGE AND PANORAMIC VIEWS OF BAYVIEW'S BEAUTY.

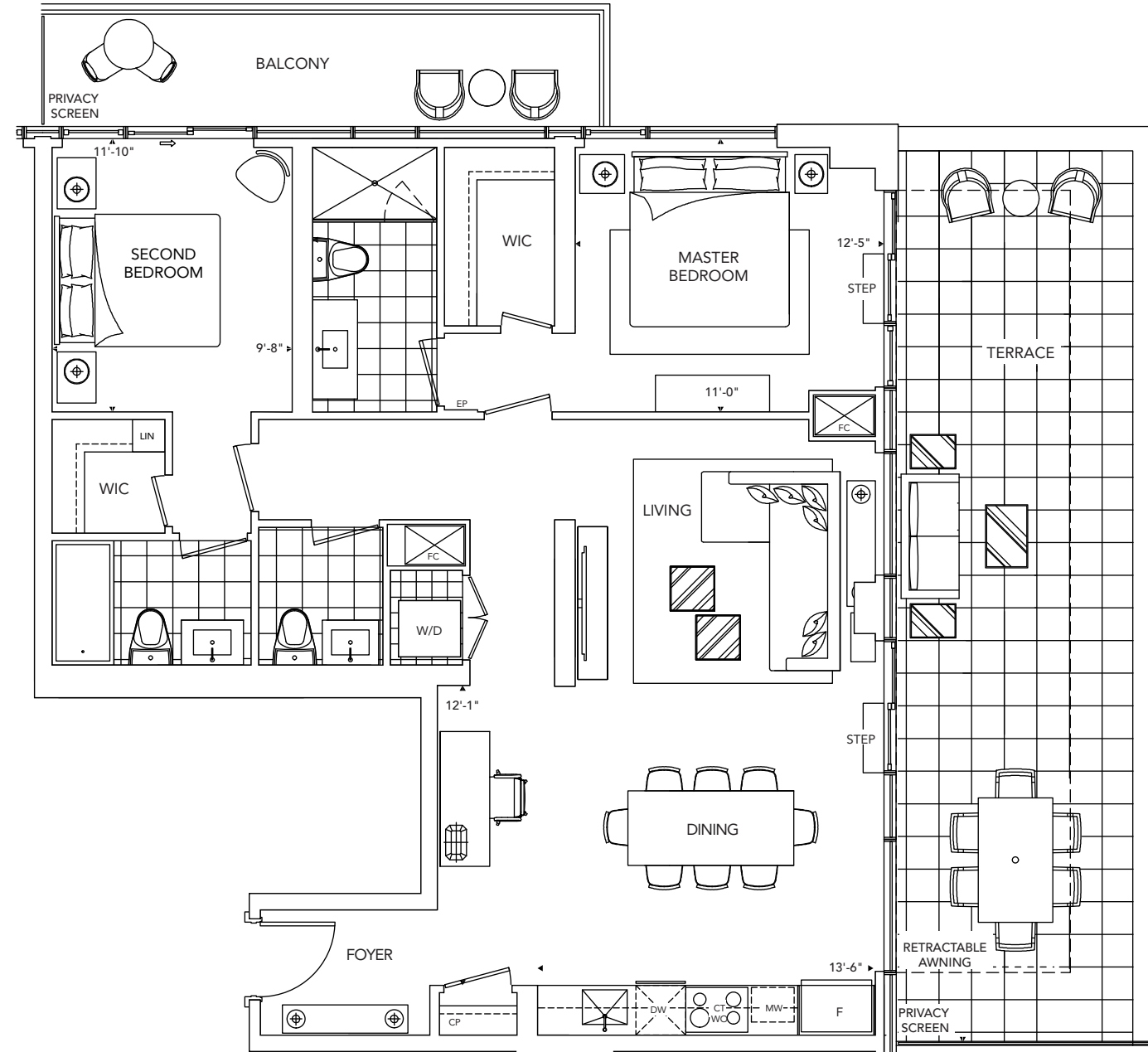


FLOORPLANS

T3B

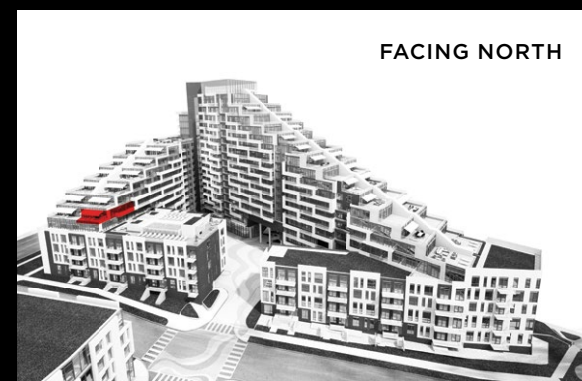
2 Bedroom

53



All dimensions are approximate and subject to normal construction variances. Dimensions may exceed the useable floor area. Sizes and specifications subject to change without notice. Furniture is displayed for illustration purposes only and does not necessarily reflect the electrical plan for the suite. Suites are sold unfurnished. E.&O.E. Tridel®, Tridel Built for Life® and Tridel Built Green. Built for Life® are registered trademarks of Tridel and used under license. ©Tridel 2015. All rights reserved. October 2015.

FACING NORTH

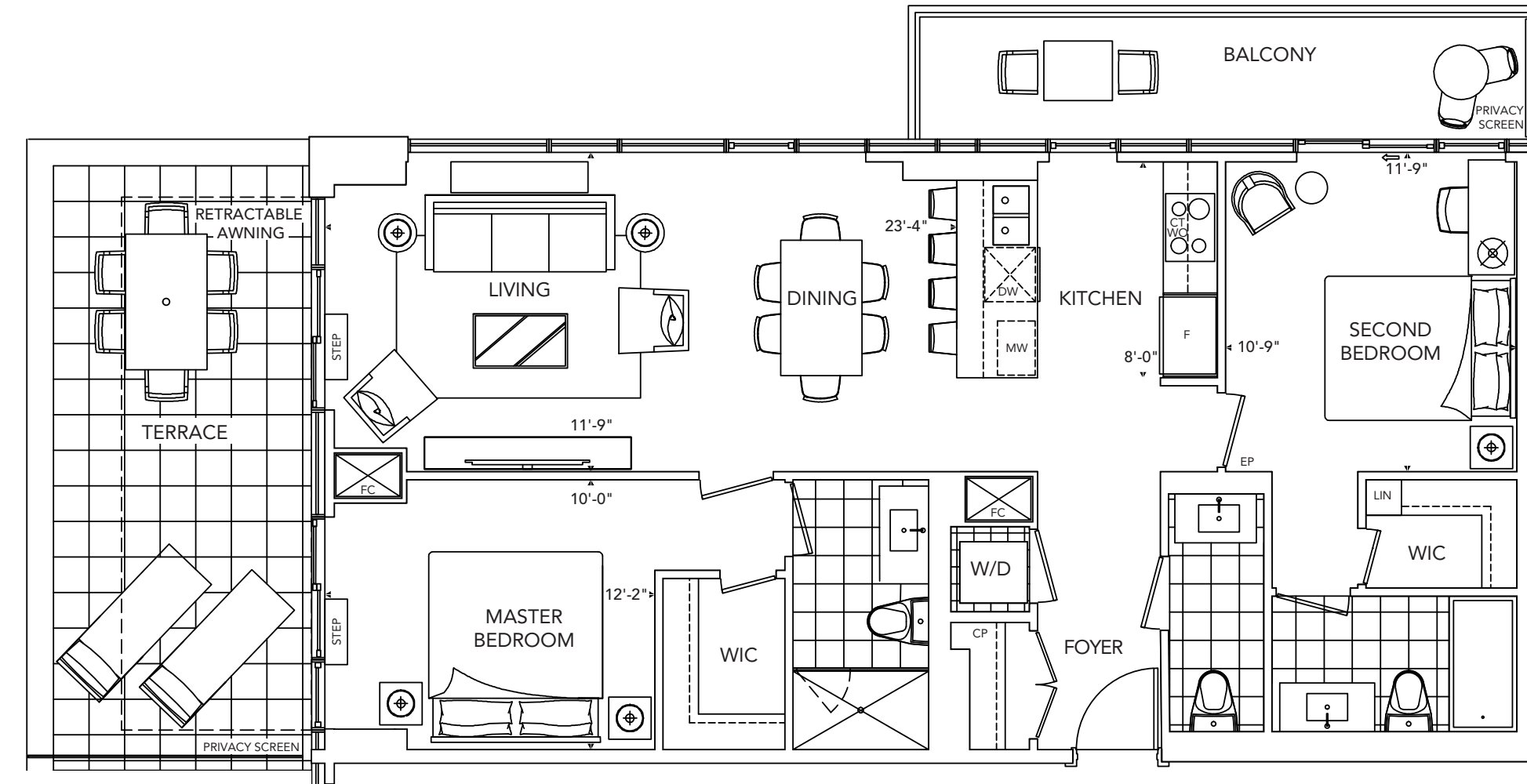


FLOORPLANS

T4B

2 Bedroom

46



All dimensions are approximate and subject to normal construction variances. Dimensions may exceed the useable floor area. Sizes and specifications subject to change without notice. Furniture is displayed for illustration purposes only and does not necessarily reflect the electrical plan for the suite. Suites are sold unfurnished. E.&O.E. Tridel®, Tridel Built for Life® and Tridel Built Green. Built for Life® are registered trademarks of Tridel and used under license. ©Tridel 2015. All rights reserved. October 2015.

FACING LESLIE

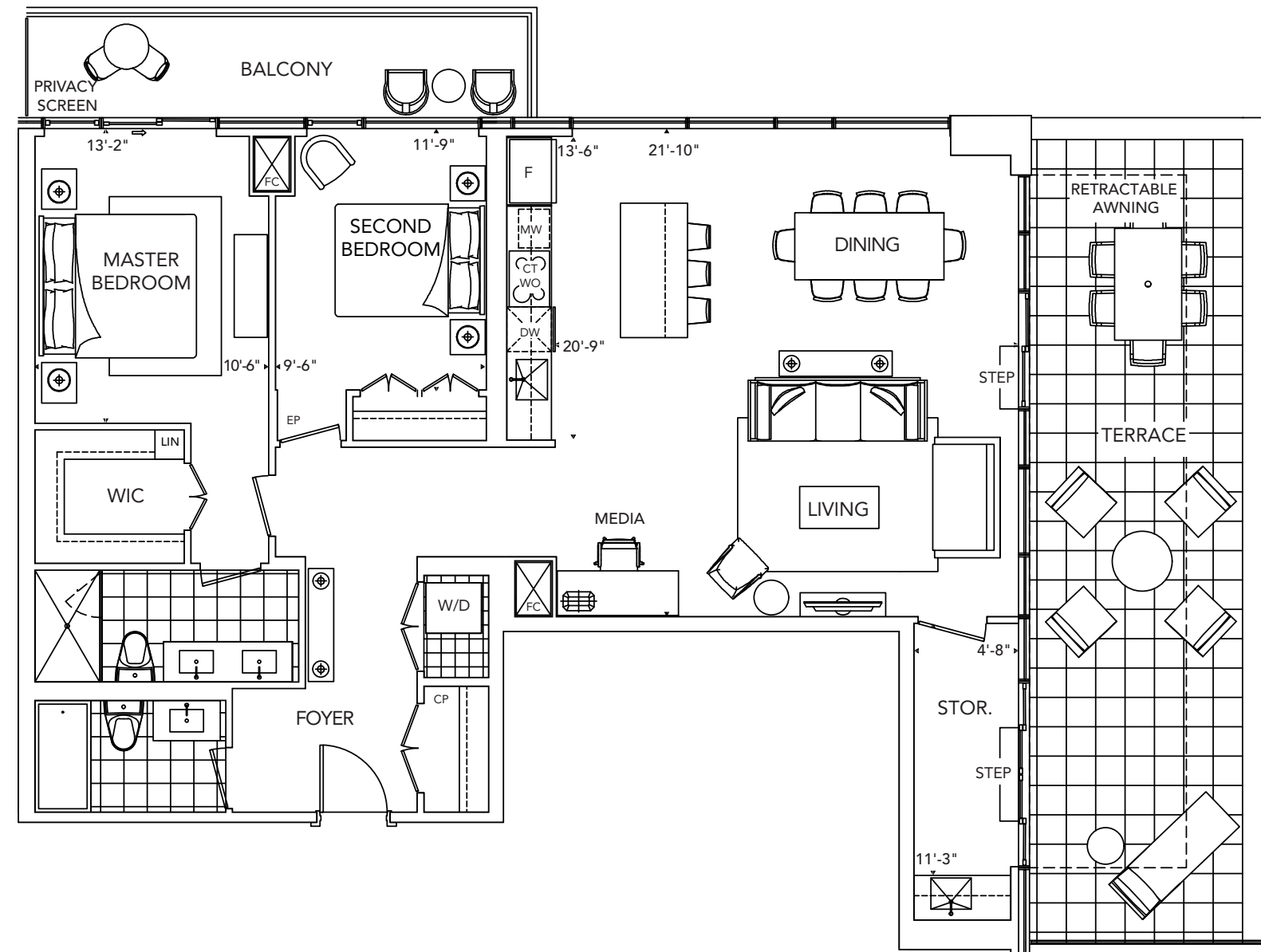


FLOORPLANS

T3C

2 Bedroom

53



All dimensions are approximate and subject to normal construction variances. Dimensions may exceed the useable floor area. Sizes and specifications subject to change without notice. Furniture is displayed for illustration purposes only and does not necessarily reflect the electrical plan for the suite. Suites are sold unfurnished. E.&O.E. Tridel®, Tridel Built for Life® and Tridel Built Green. Built for Life® are registered trademarks of Tridel and used under license. ©Tridel 2015. All rights reserved. October 2015.

FACING NORTH

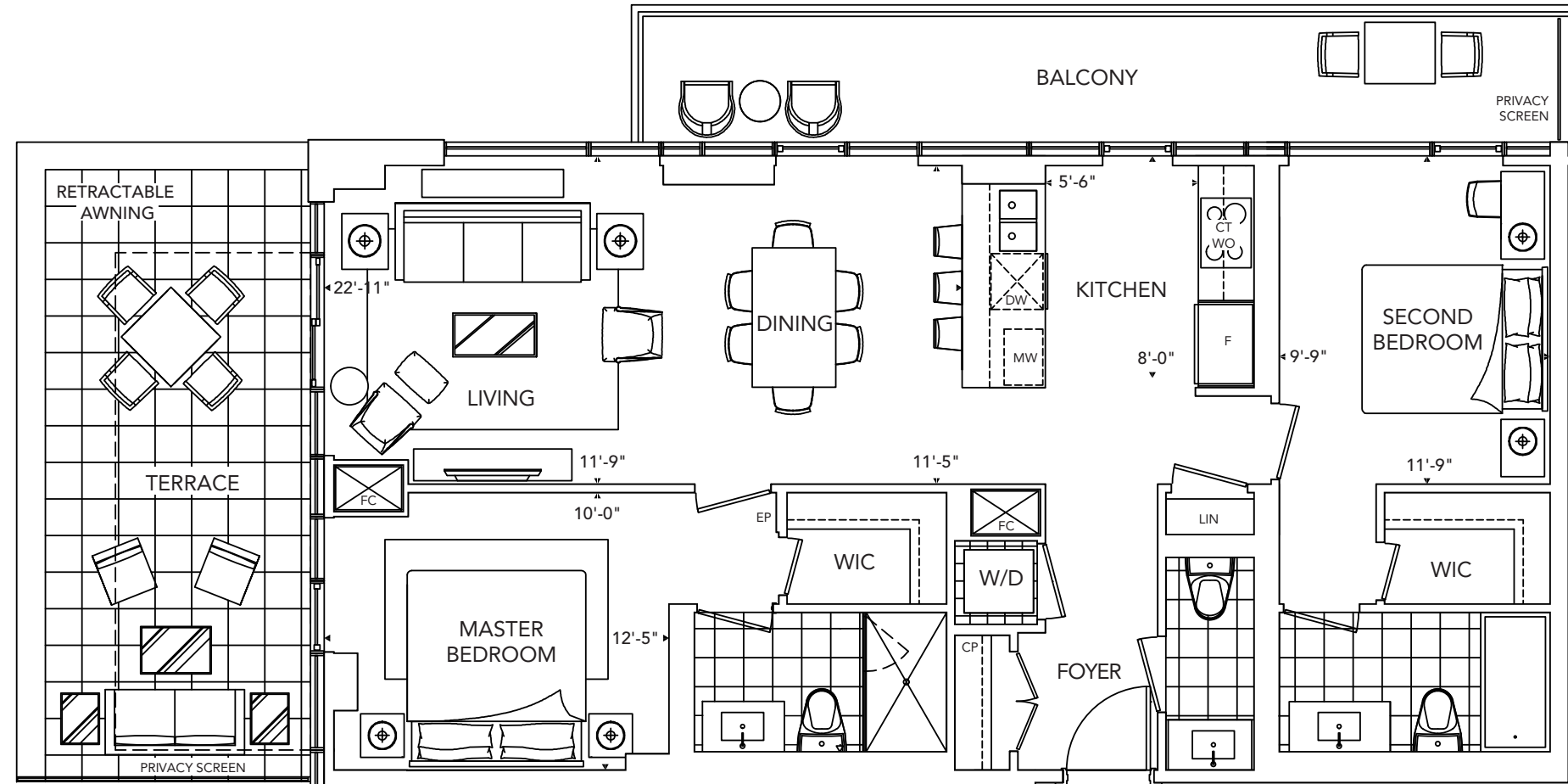


FLOORPLANS

T4A

2 Bedroom

46



All dimensions are approximate and subject to normal construction variances. Dimensions may exceed the useable floor area. Sizes and specifications subject to change without notice. Furniture is displayed for illustration purposes only and does not necessarily reflect the electrical plan for the suite. Suites are sold unfurnished. E.&O.E. Tridel®, Tridel Built for Life® and Tridel Built Green. Built for Life® are registered trademarks of Tridel and used under license. ©Tridel 2015. All rights reserved. October 2015.

FACING LESLIE



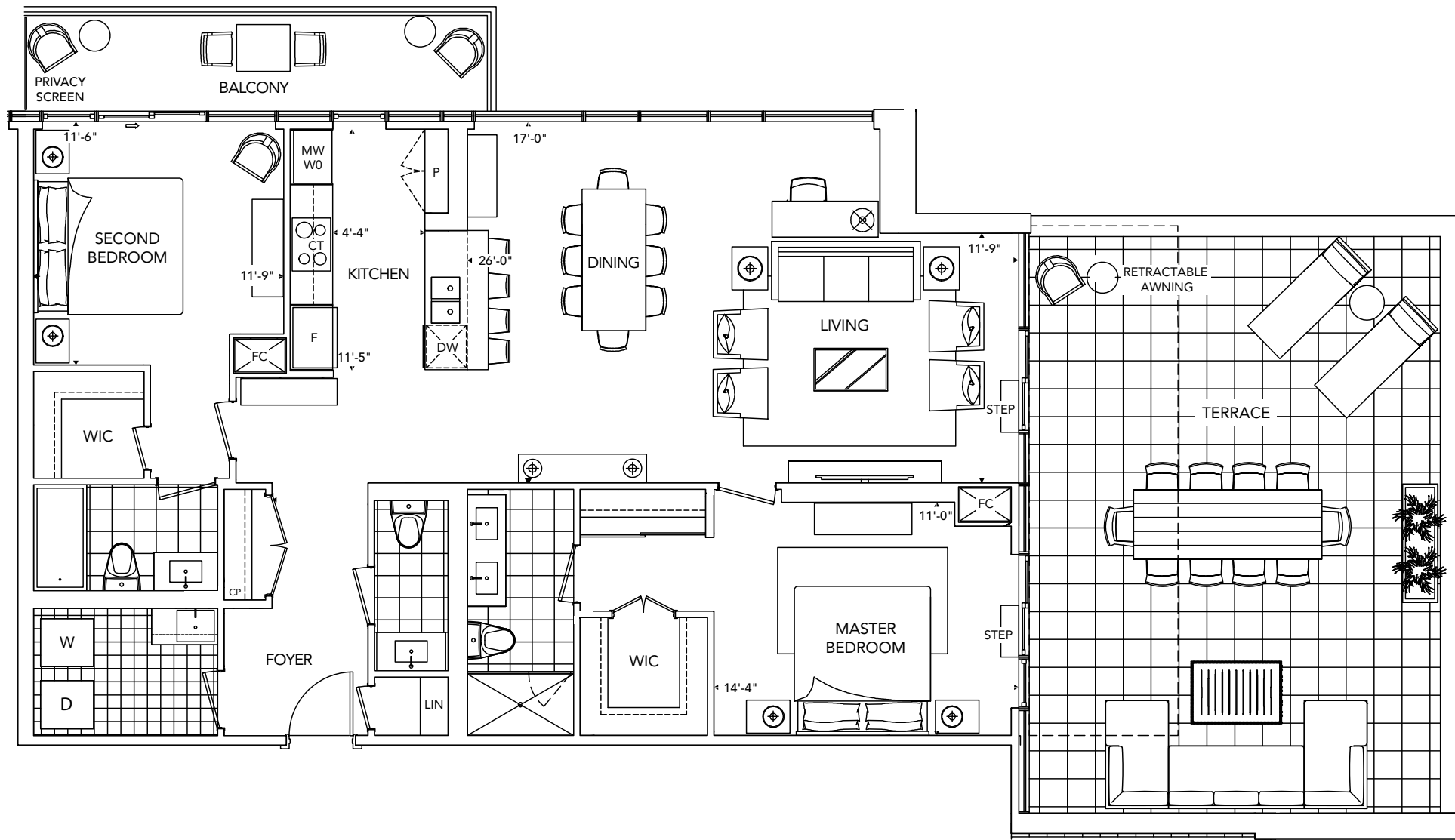
FLOORPLANS

T1J

2 Bedroom

20

FACING RAVINE



All dimensions are approximate and subject to normal construction variances. Dimensions may exceed the useable floor area. Sizes and specifications subject to change without notice. Furniture is displayed for illustration purposes only and does not necessarily reflect the electrical plan for the suite. Suites are sold unfurnished. E.&O.E. Tridel®, Tridel Built for Life® and Tridel Built Green. Built for Life® are registered trademarks of Tridel and used under license. ©Tridel 2015. All rights reserved. October 2015.

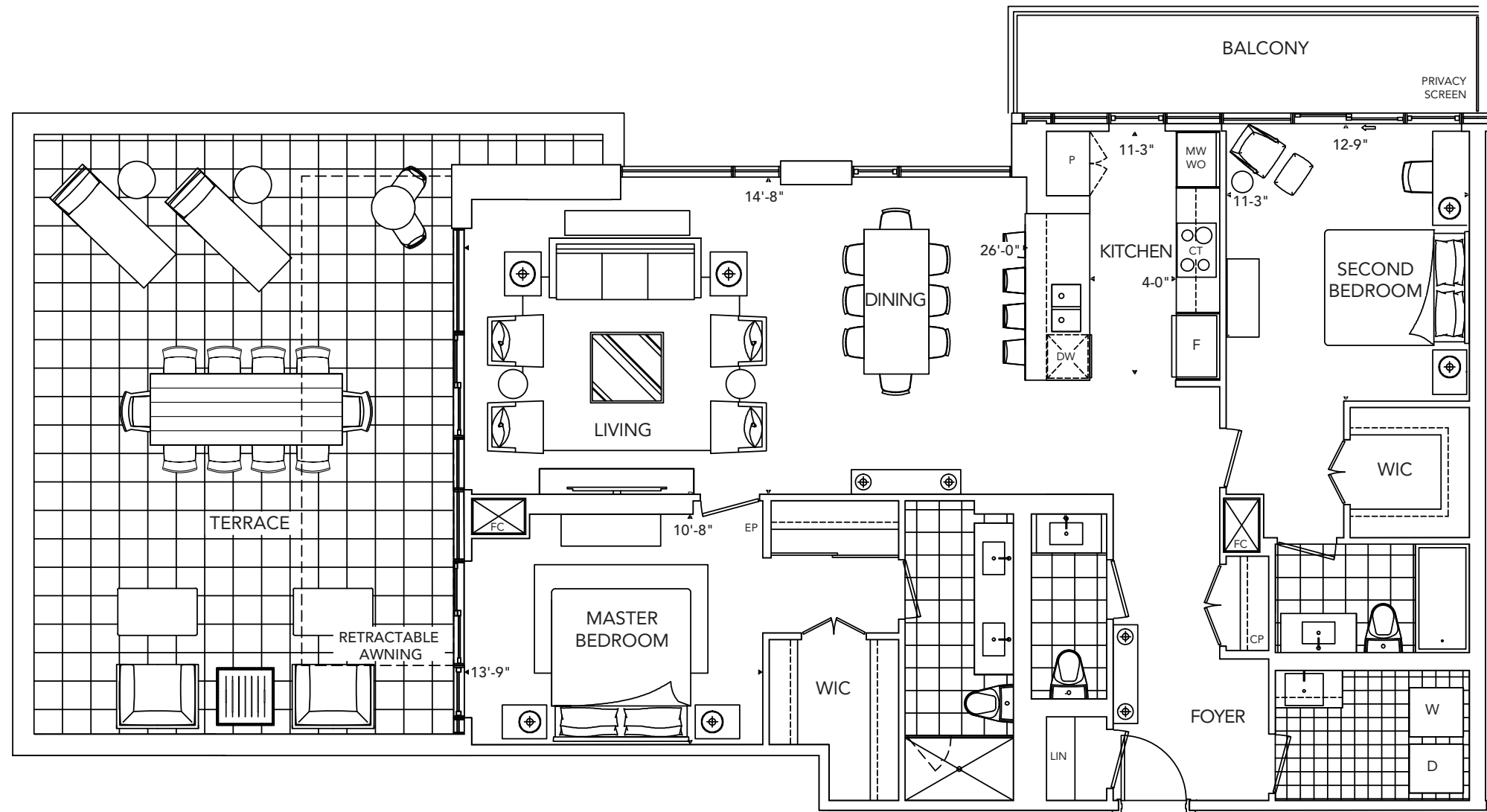
FLOORPLANS

T2C

2 Bedroom

19

FACING NORTH



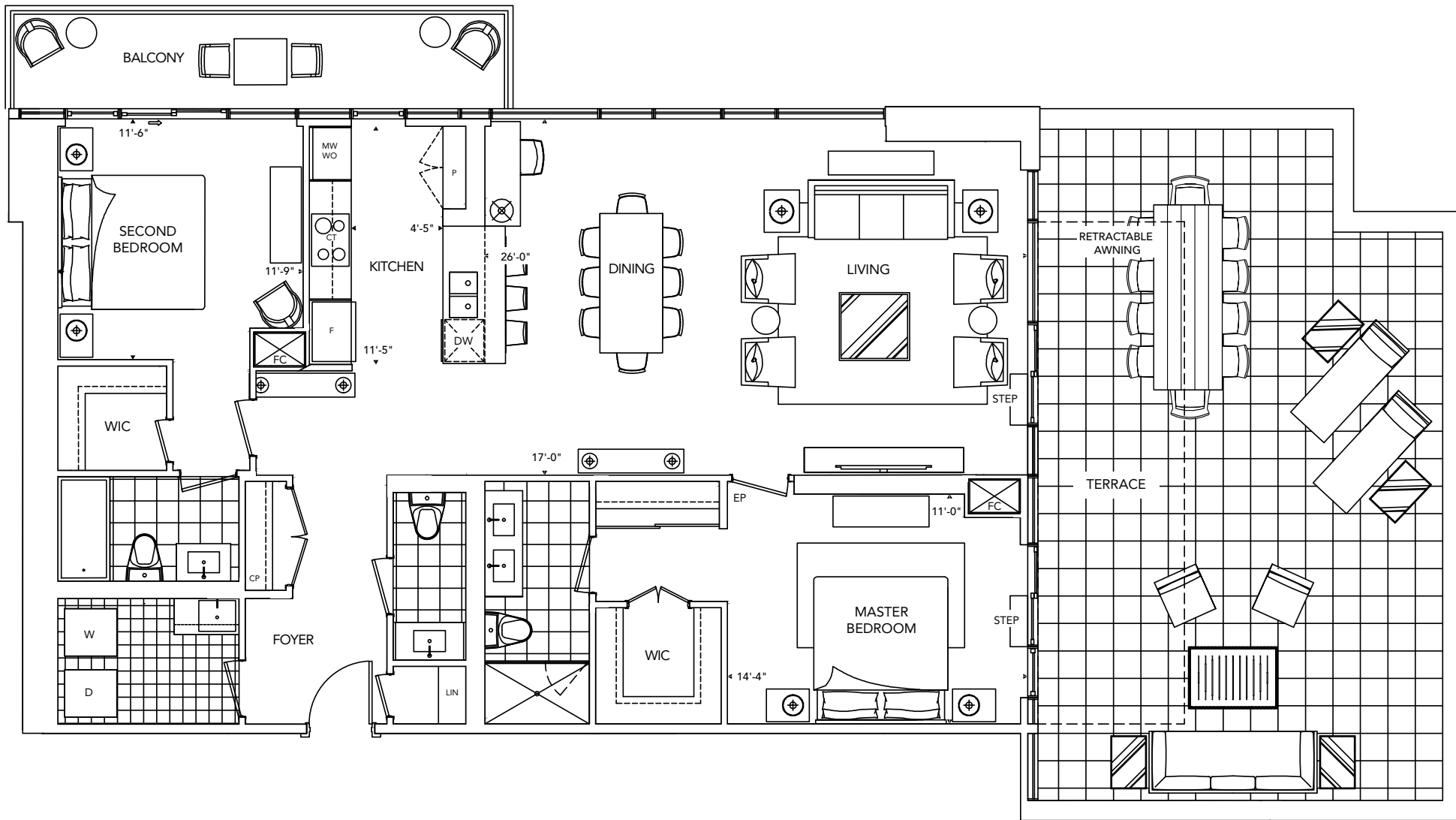
All dimensions are approximate and subject to normal construction variances. Dimensions may exceed the useable floor area. Sizes and specifications subject to change without notice. Furniture is displayed for illustration purposes only and does not necessarily reflect the electrical plan for the suite. Suites are sold unfurnished. E.&O.E. Tridel®, Tridel Built for Life® and Tridel Built Green. Built for Life® are registered trademarks of Tridel and used under license. ©Tridel 2015. All rights reserved. October 2015.



**T1F**

2 Bedroom

20



All dimensions are approximate and subject to normal construction variances. Dimensions may exceed the useable floor area. Sizes and specifications subject to change without notice. Furniture is displayed for illustration purposes only and does not necessarily reflect the electrical plan for the suite. Suites are sold unfurnished. E.&O.E. Tridel®, Tridel Built for Life® and Tridel Built Green. Built for Life® are registered trademarks of Tridel and used under license. ©Tridel 2015. All rights reserved. October 2015.

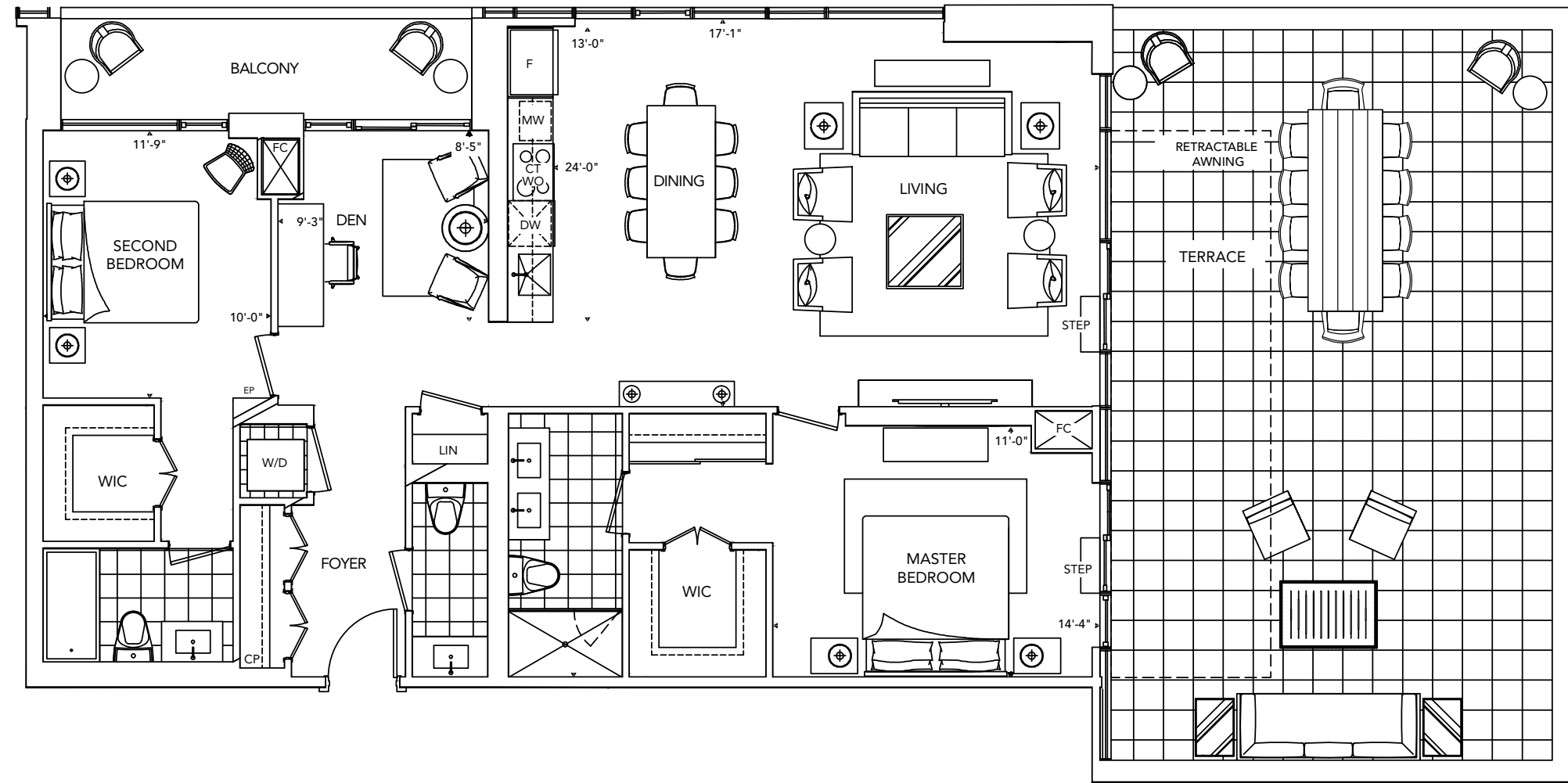
FACING RAVINE



**T1C**

2 Bedroom

20



All dimensions are approximate and subject to normal construction variances. Dimensions may exceed the useable floor area. Sizes and specifications subject to change without notice. Furniture is displayed for illustration purposes only and does not necessarily reflect the electrical plan for the suite. Suites are sold unfurnished. E.&O.E. Tridel®, Tridel Built for Life® and Tridel Built Green. Built for Life® are registered trademarks of Tridel and used under license. ©Tridel 2015. All rights reserved. October 2015.

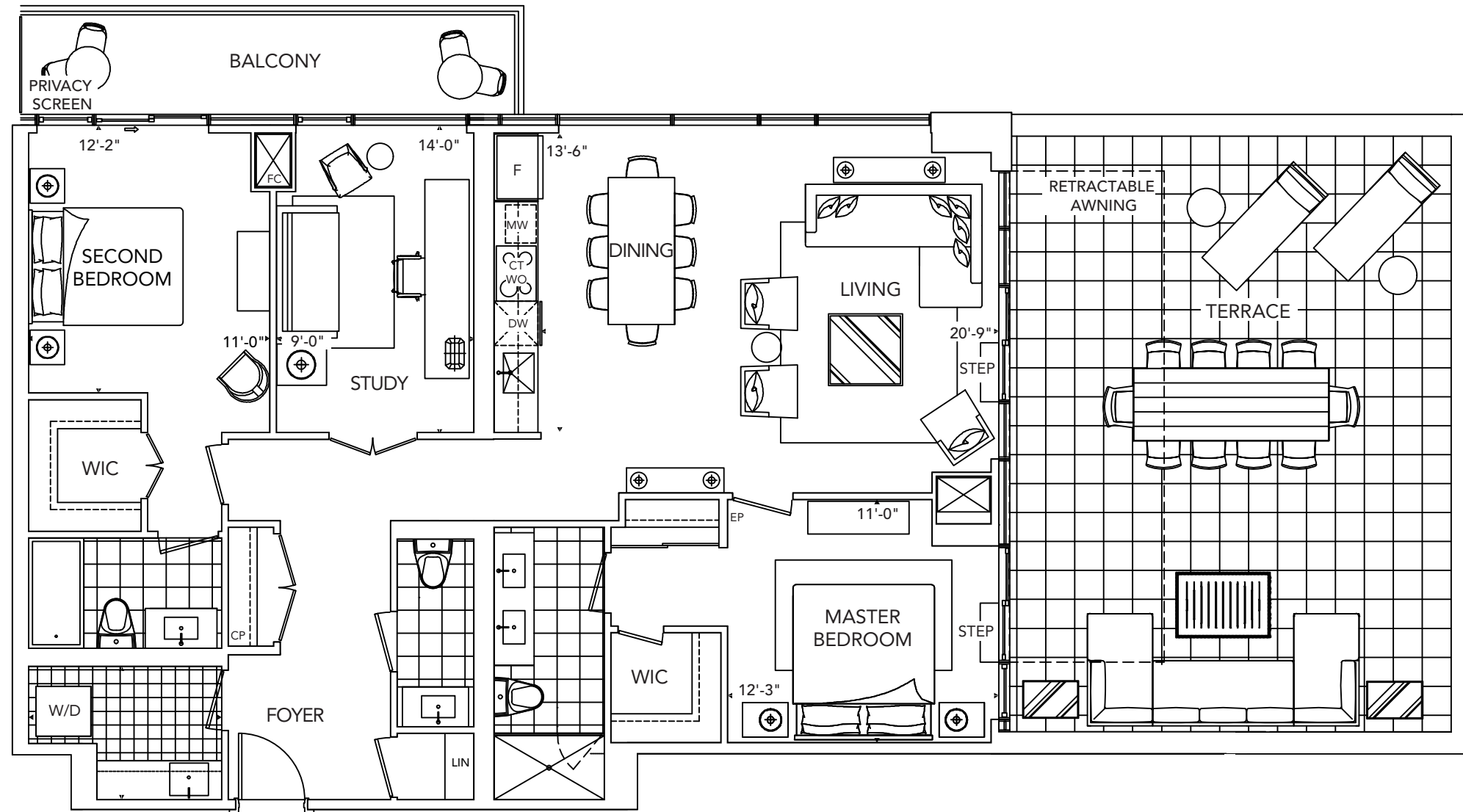
FACING RAVINE



T3D

2 Bedroom

53



All dimensions are approximate and subject to normal construction variances. Dimensions may exceed the useable floor area. Sizes and specifications subject to change without notice. Furniture is displayed for illustration purposes only and does not necessarily reflect the electrical plan for the suite. Suites are sold unfurnished. E.&O.E. Tridel®, Tridel Built for Life® and Tridel Built Green. Built for Life® are registered trademarks of Tridel and used under license. ©Tridel 2015. All rights reserved. October 2015.

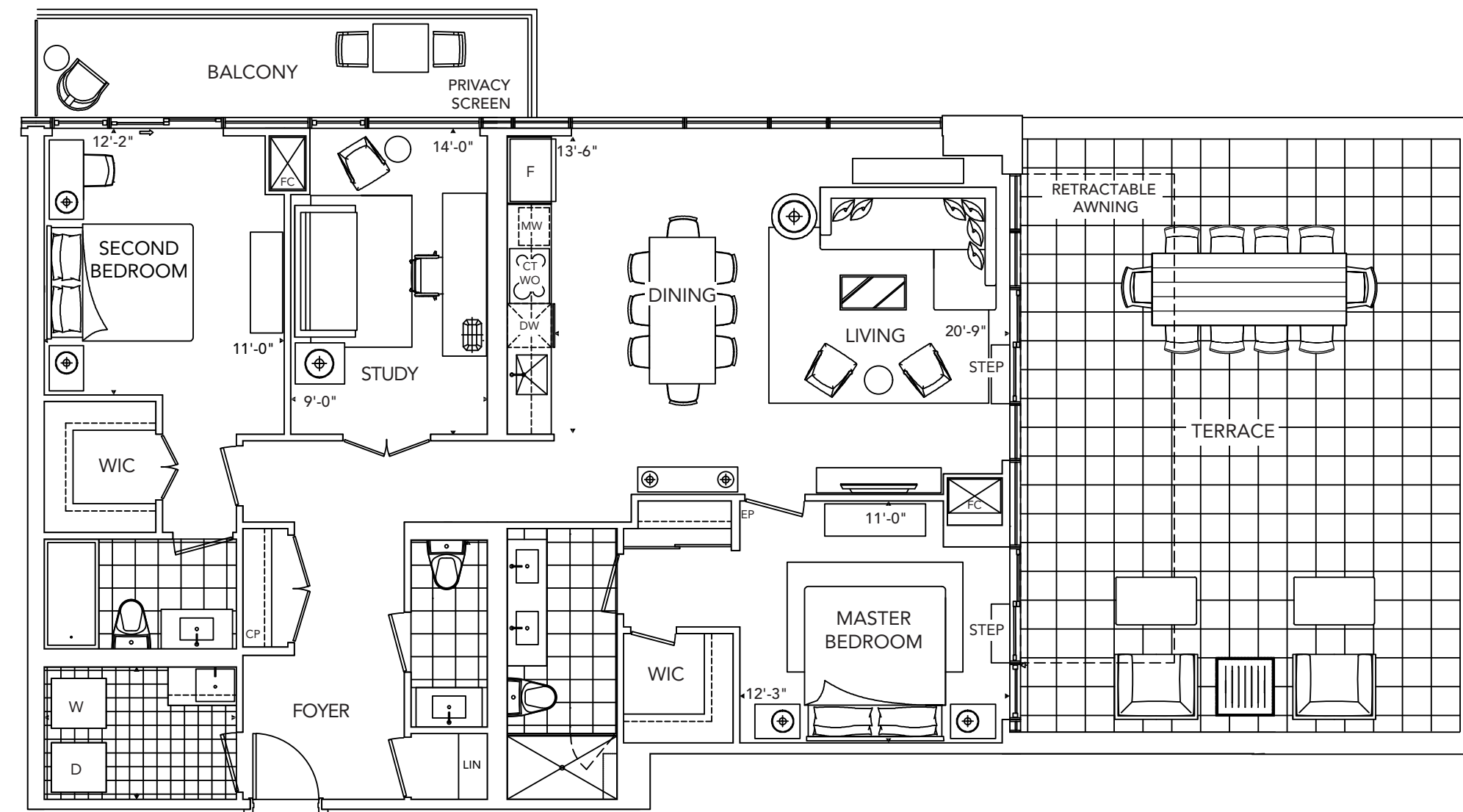
FACING NORTH



T3E

2 Bedroom

53



All dimensions are approximate and subject to normal construction variances. Dimensions may exceed the useable floor area. Sizes and specifications subject to change without notice. Furniture is displayed for illustration purposes only and does not necessarily reflect the electrical plan for the suite. Suites are sold unfurnished. E.&O.E. Tridel®, Tridel Built for Life® and Tridel Built Green. Built for Life® are registered trademarks of Tridel and used under license. ©Tridel 2015. All rights reserved. October 2015.

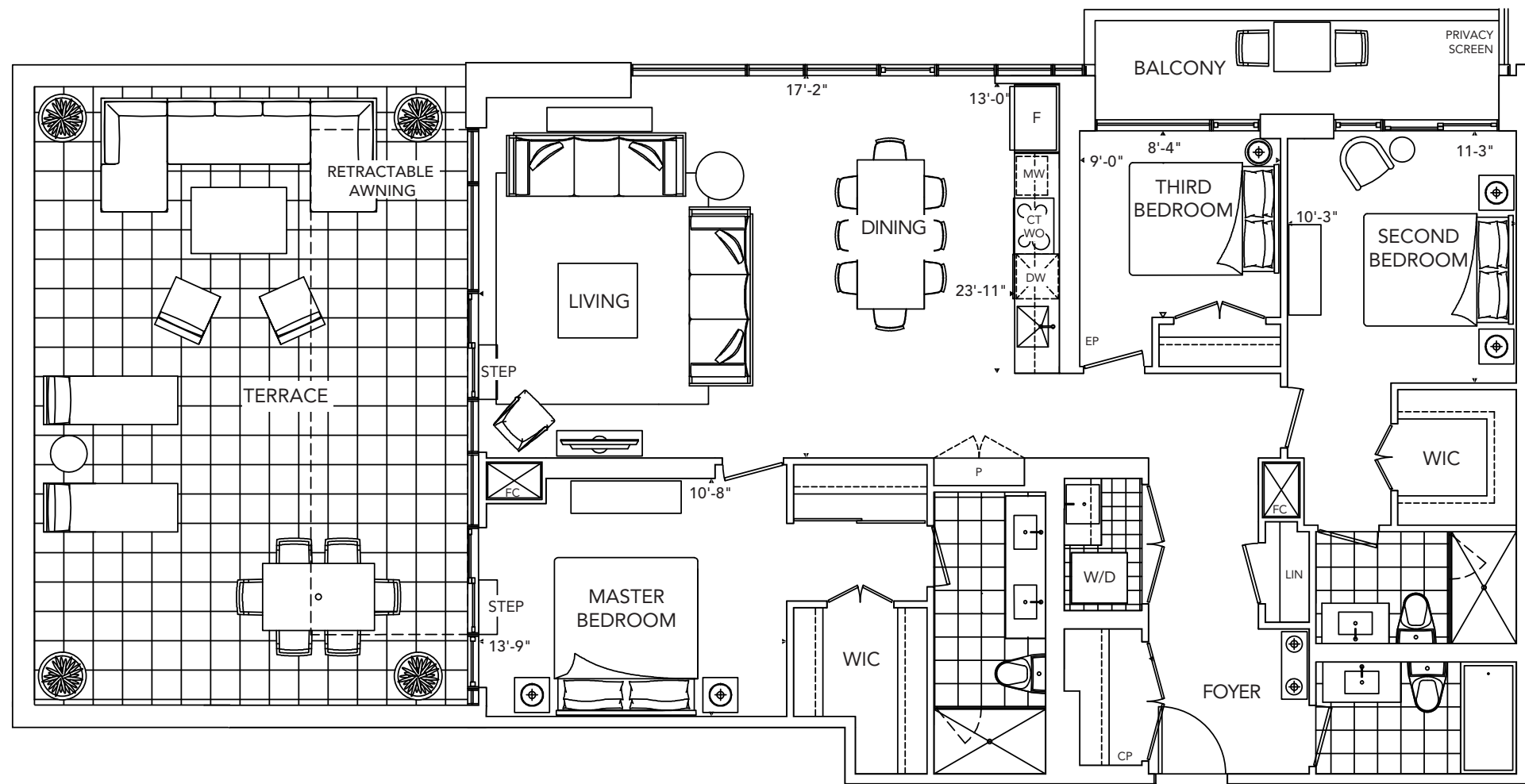
FACING NORTH



**T2B**

3 Bedroom

19



All dimensions are approximate and subject to normal construction variances. Dimensions may exceed the useable floor area. Sizes and specifications subject to change without notice. Furniture is displayed for illustration purposes only and does not necessarily reflect the electrical plan for the suite. Suites are sold unfurnished. E.&O.E. Tridel®, Tridel Built for Life® and Tridel Built Green. Built for Life® are registered trademarks of Tridel and used under license. ©Tridel 2015. All rights reserved. October 2015.

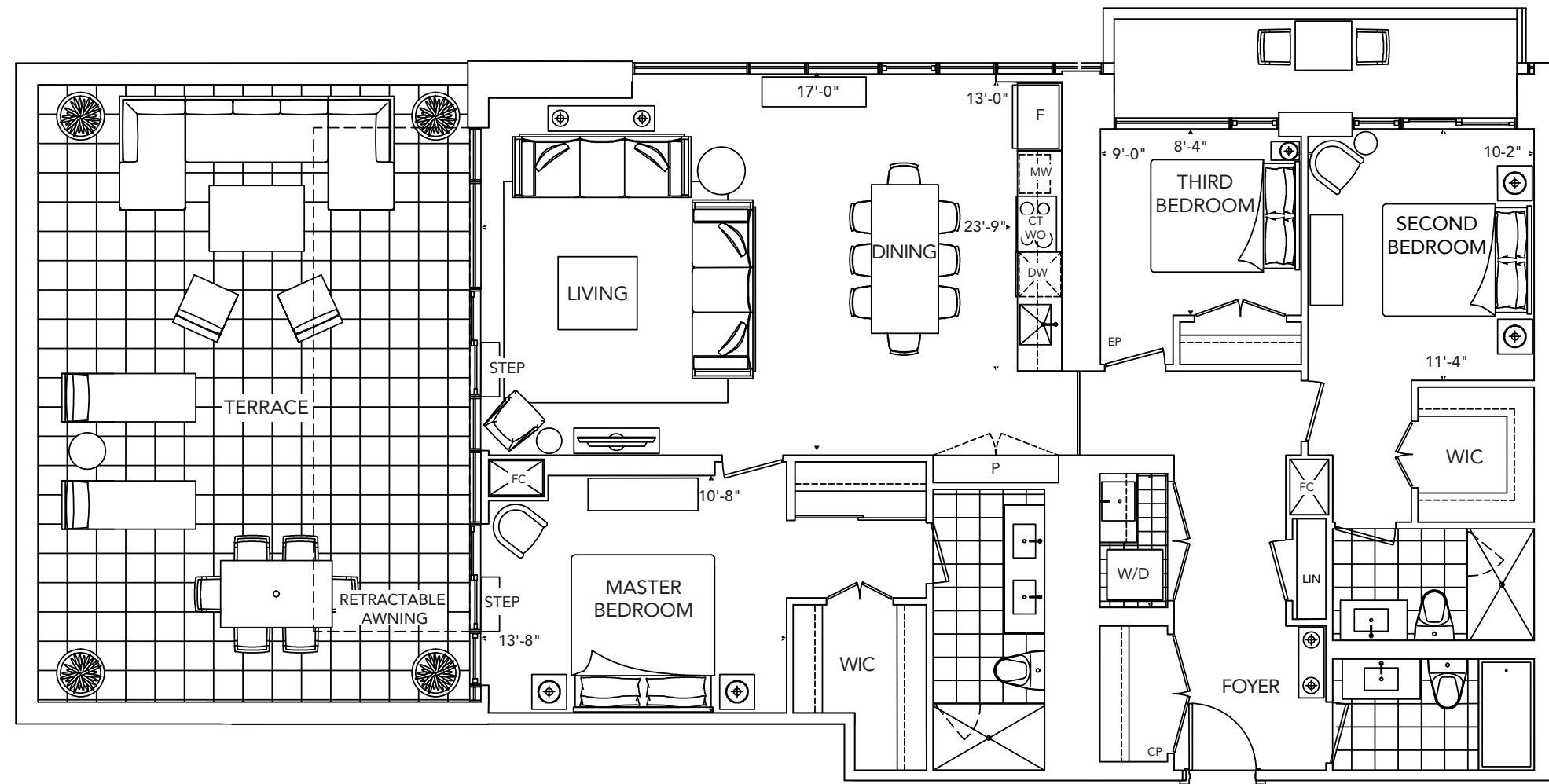
FACING NORTH



**T2E**

3 Bedroom

19



All dimensions are approximate and subject to normal construction variances. Dimensions may exceed the useable floor area. Sizes and specifications subject to change without notice. Furniture is displayed for illustration purposes only and does not necessarily reflect the electrical plan for the suite. Suites are sold unfurnished. E.&O.E. Tridel®, Tridel Built for Life® and Tridel Built Green. Built for Life® are registered trademarks of Tridel and used under license. ©Tridel 2015. All rights reserved. October 2015.

FACING NORTH

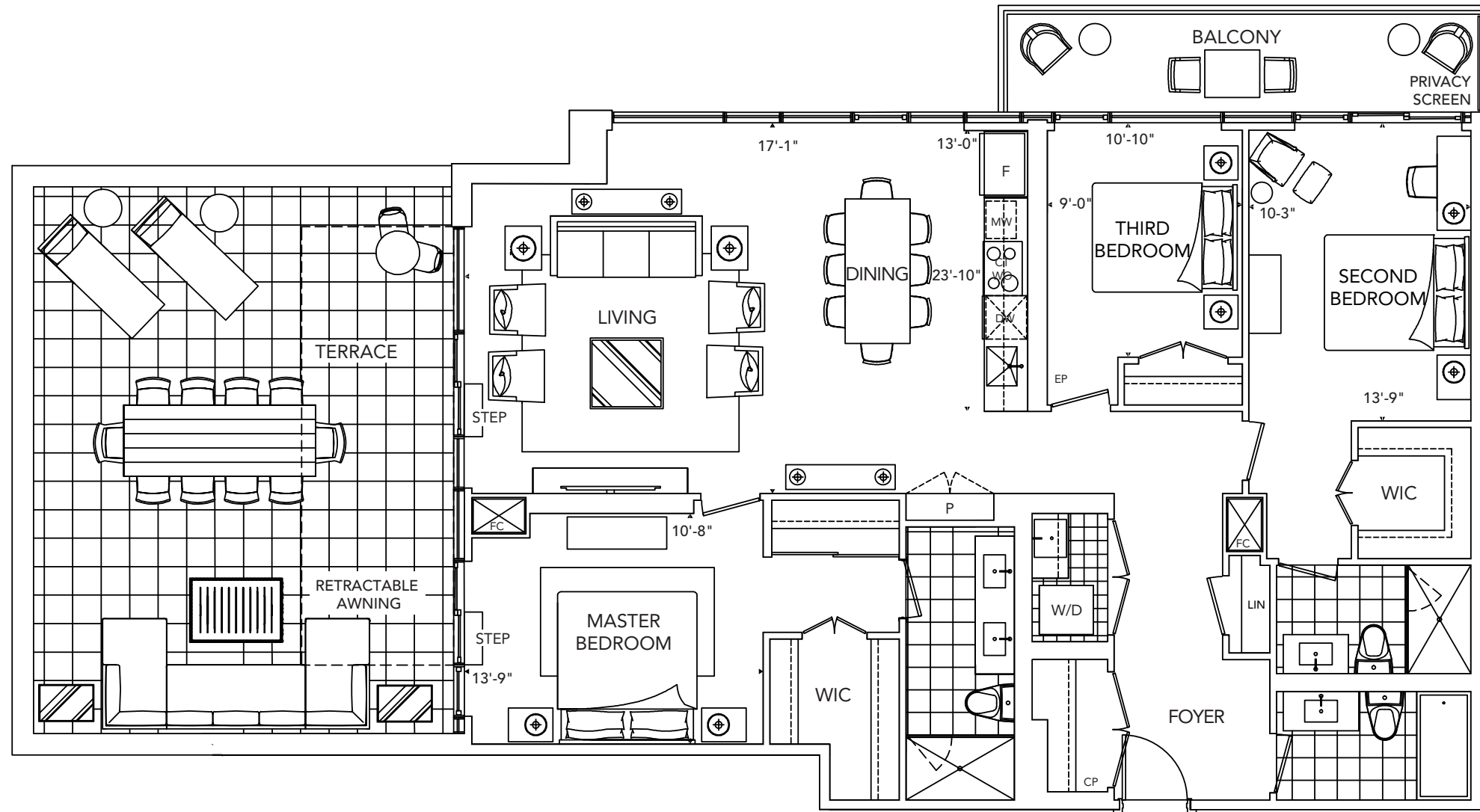


FLOORPLANS

**T2F**

3 Bedroom

19



All dimensions are approximate and subject to normal construction variances. Dimensions may exceed the useable floor area. Sizes and specifications subject to change without notice. Furniture is displayed for illustration purposes only and does not necessarily reflect the electrical plan for the suite. Suites are sold unfurnished. E.&O.E. Tridel®, Tridel Built for Life® and Tridel Built Green. Built for Life® are registered trademarks of Tridel and used under license. ©Tridel 2015. All rights reserved. October 2015.

FACING NORTH

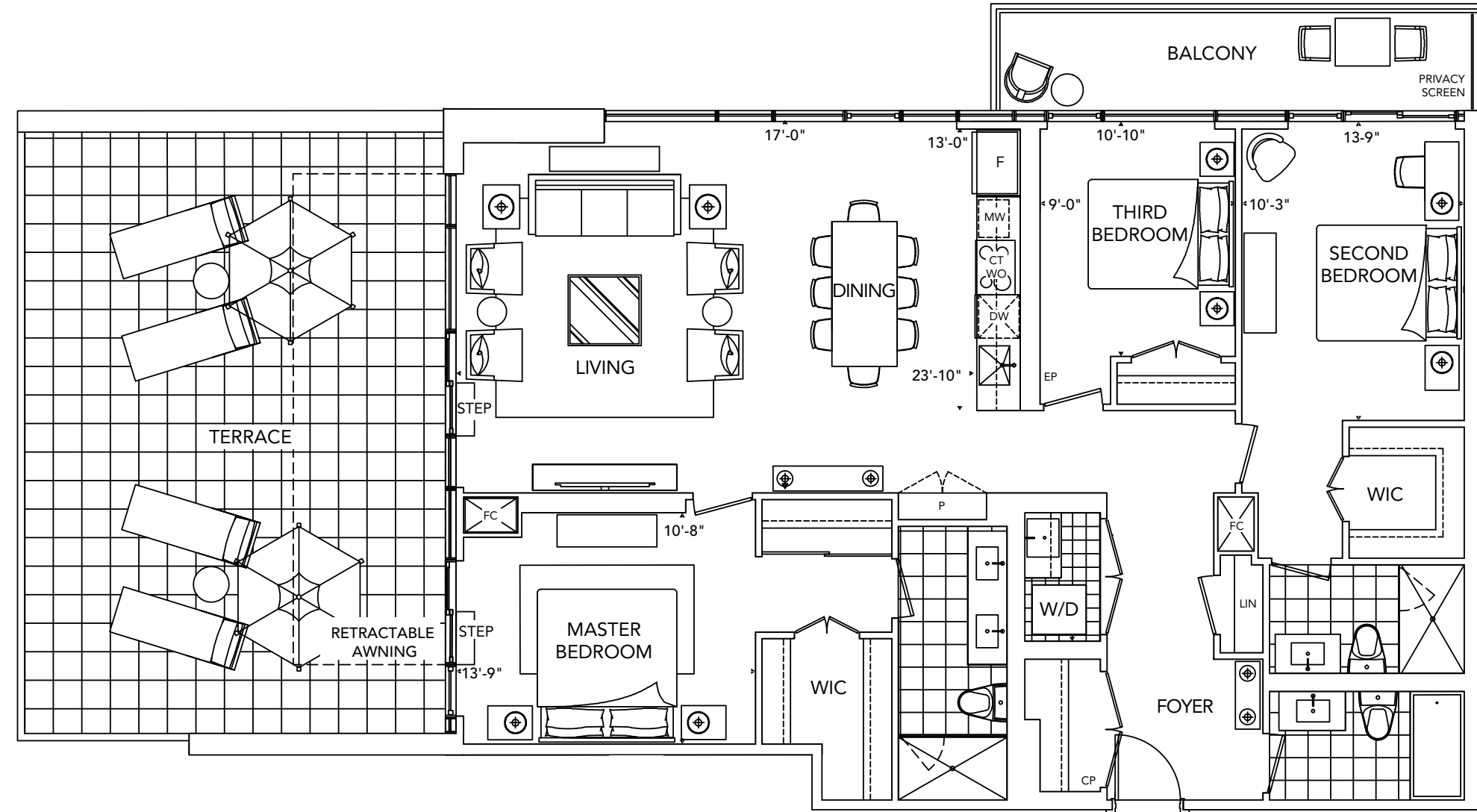


FLOORPLANS

**T2A**

3 Bedroom

19



All dimensions are approximate and subject to normal construction variances. Dimensions may exceed the useable floor area. Sizes and specifications subject to change without notice. Furniture is displayed for illustration purposes only and does not necessarily reflect the electrical plan for the suite. Suites are sold unfurnished. E.&O.E. Tridel®, Tridel Built for Life® and Tridel Built Green. Built for Life® are registered trademarks of Tridel and used under license. ©Tridel 2015. All rights reserved. October 2015.

FACING NORTH

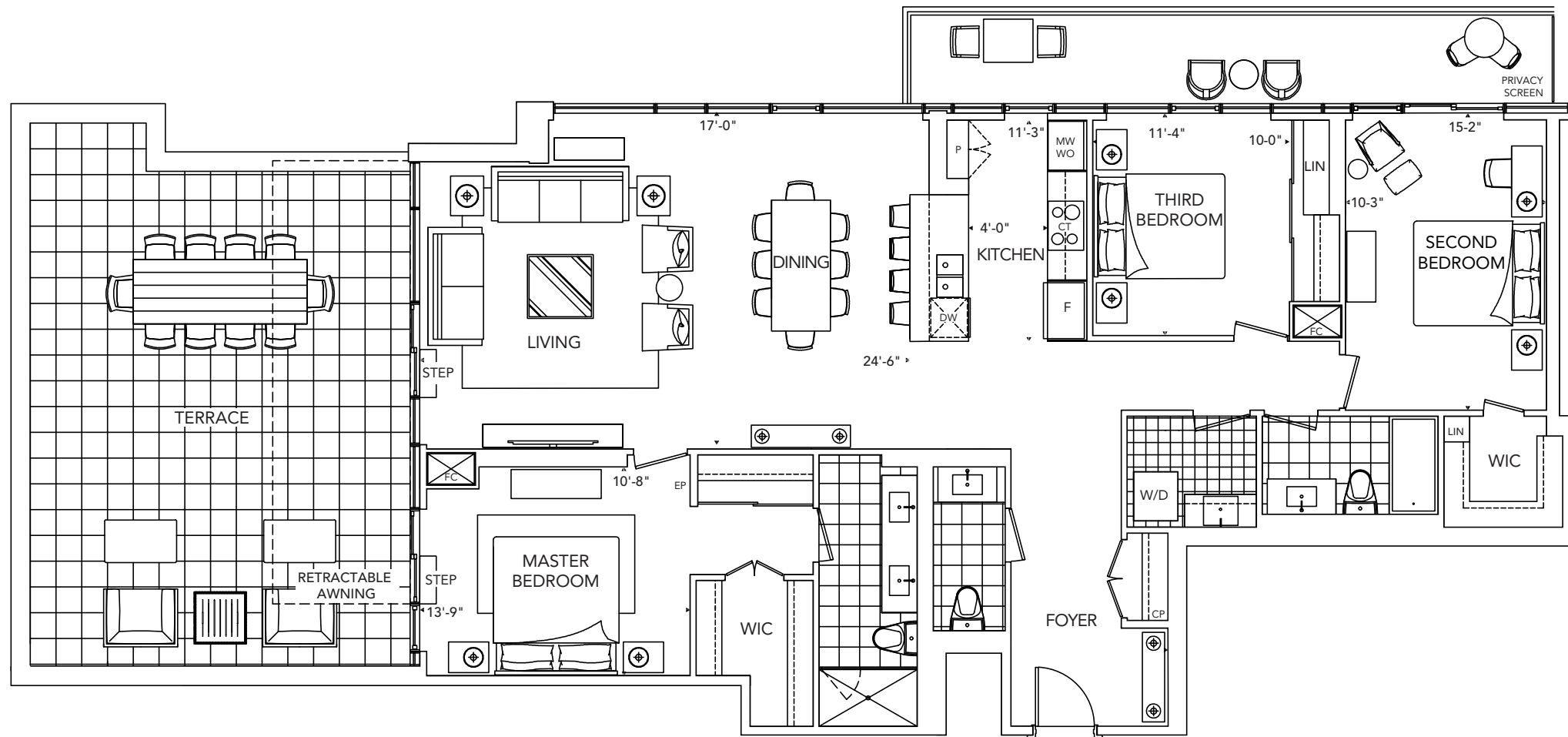




**T2D**

3 Bedroom

19



FACING NORTH

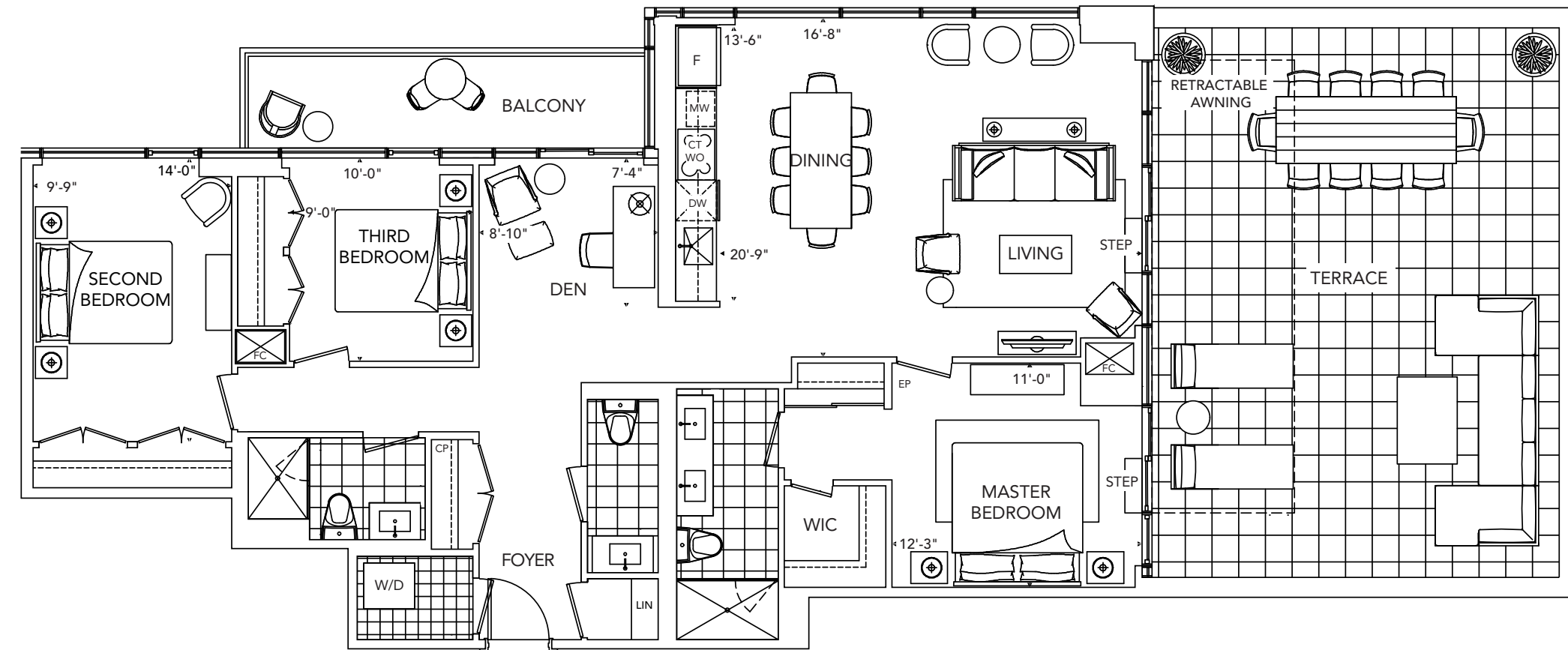


All dimensions are approximate and subject to normal construction variances. Dimensions may exceed the useable floor area. Sizes and specifications subject to change without notice. Furniture is displayed for illustration purposes only and does not necessarily reflect the electrical plan for the suite. Suites are sold unfurnished. E.&O.E. Tridel®, Tridel Built for Life® and Tridel Built Green. Built for Life® are registered trademarks of Tridel and used under license. ©Tridel 2015. All rights reserved. October 2015.

**T3F**

3 Bedroom + Den

53



FACING NORTH



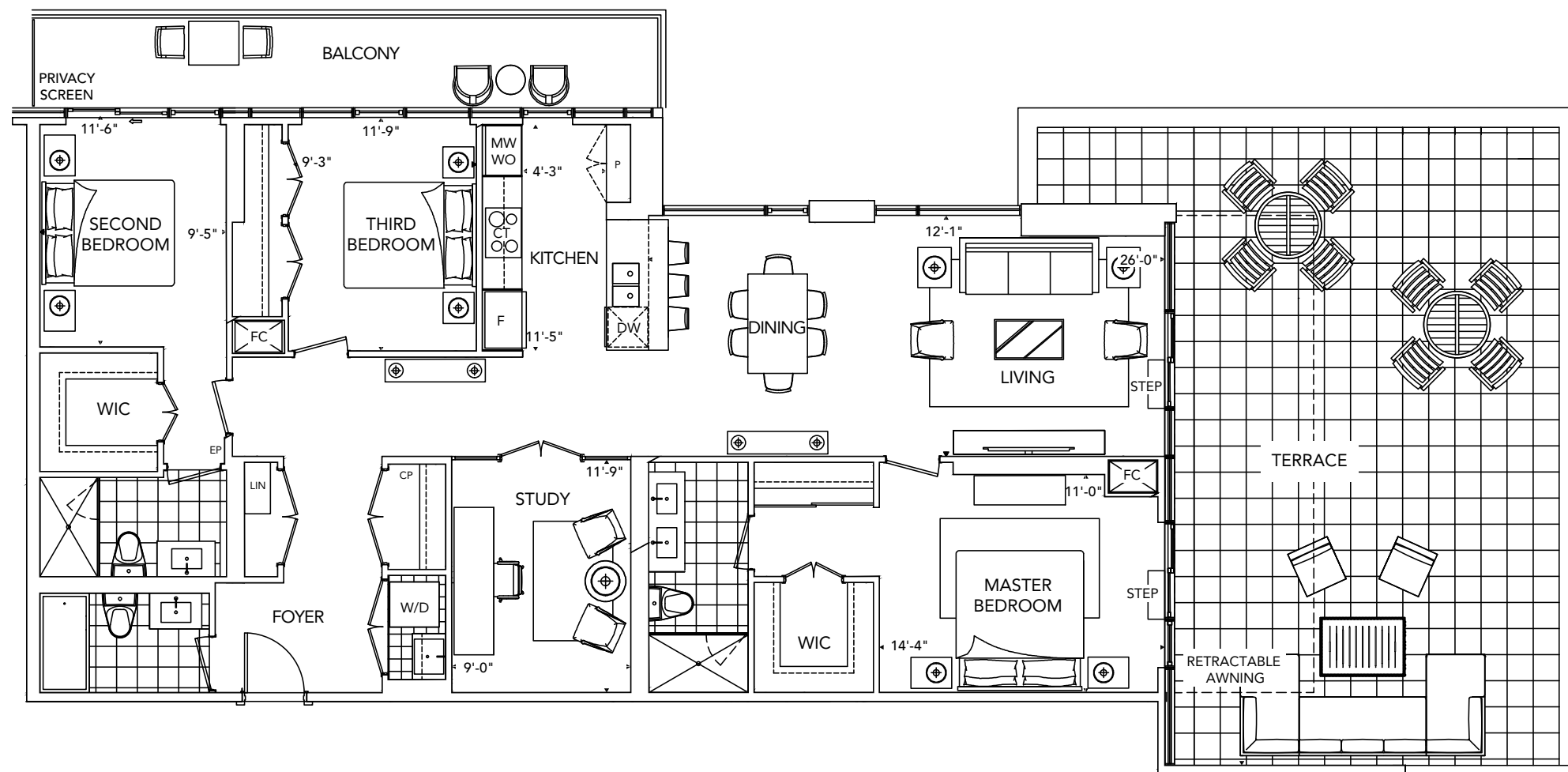
All dimensions are approximate and subject to normal construction variances. Dimensions may exceed the useable floor area. Sizes and specifications subject to change without notice. Furniture is displayed for illustration purposes only and does not necessarily reflect the electrical plan for the suite. Suites are sold unfurnished. E.&O.E. Tridel®, Tridel Built for Life® and Tridel Built Green. Built for Life® are registered trademarks of Tridel and used under license. ©Tridel 2015. All rights reserved. October 2015.

*FLOORPLANS*

## T1D

3 Bedroom + Den

20



All dimensions are approximate and subject to normal construction variances. Dimensions may exceed the useable floor area. Sizes and specifications subject to change without notice. Furniture is displayed for illustration purposes only and does not necessarily reflect the electrical plan for the suite. Suites are sold unfurnished. E.O.E. Tridel®, Tridel Built for Life® and Tridel Built Green. Built for Life® are registered trademarks of Tridel and used under license. ©Tridel 2015. All rights reserved. October 2015.

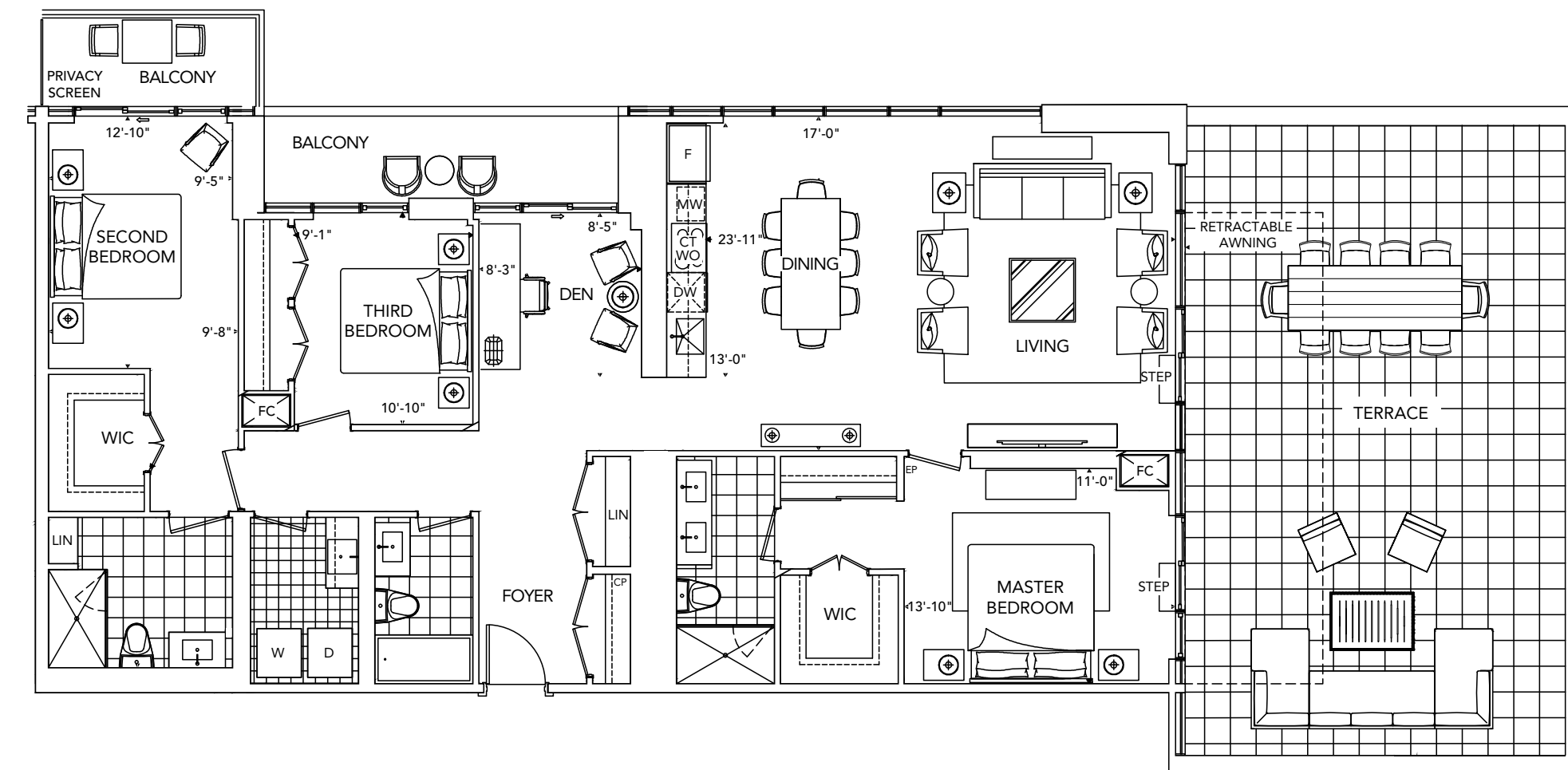


*FLOORPLANS*

**T1G**

3 Bedroom + Den

20



All dimensions are approximate and subject to normal construction variances. Dimensions may exceed the useable floor area. Sizes and specifications subject to change without notice. Furniture is displayed for illustration purposes only and does not necessarily reflect the electrical plan for the suite. Suites are sold unfurnished. E.&O.E. Tridel®, Tridel Built for Life® and Tridel Built Green. Built for Life® are registered trademarks of Tridel and used under license. ©Tridel 2015. All rights reserved. October 2015.

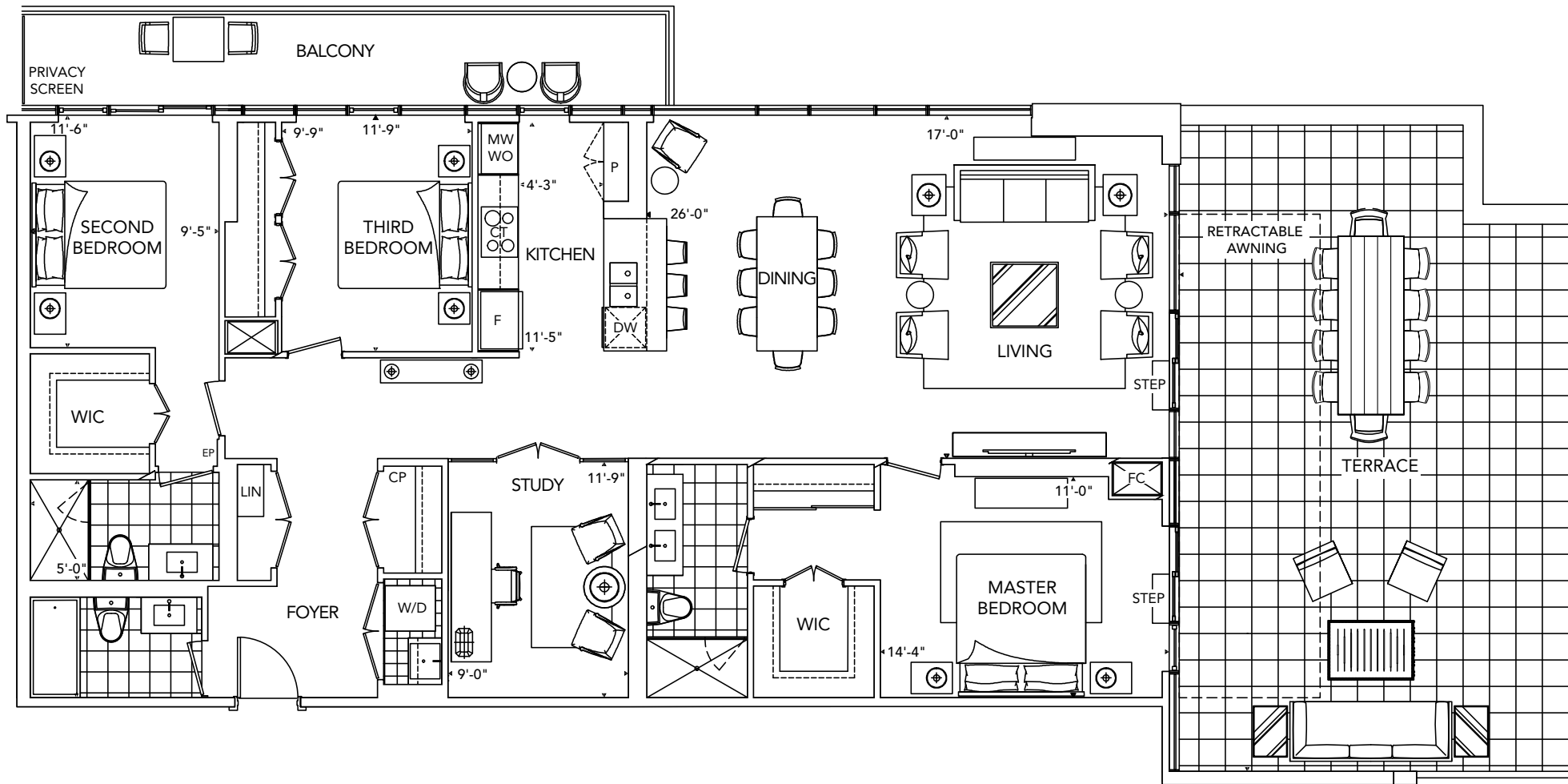




**T1A**

3 Bedroom + Den

20



FACING RAVINE

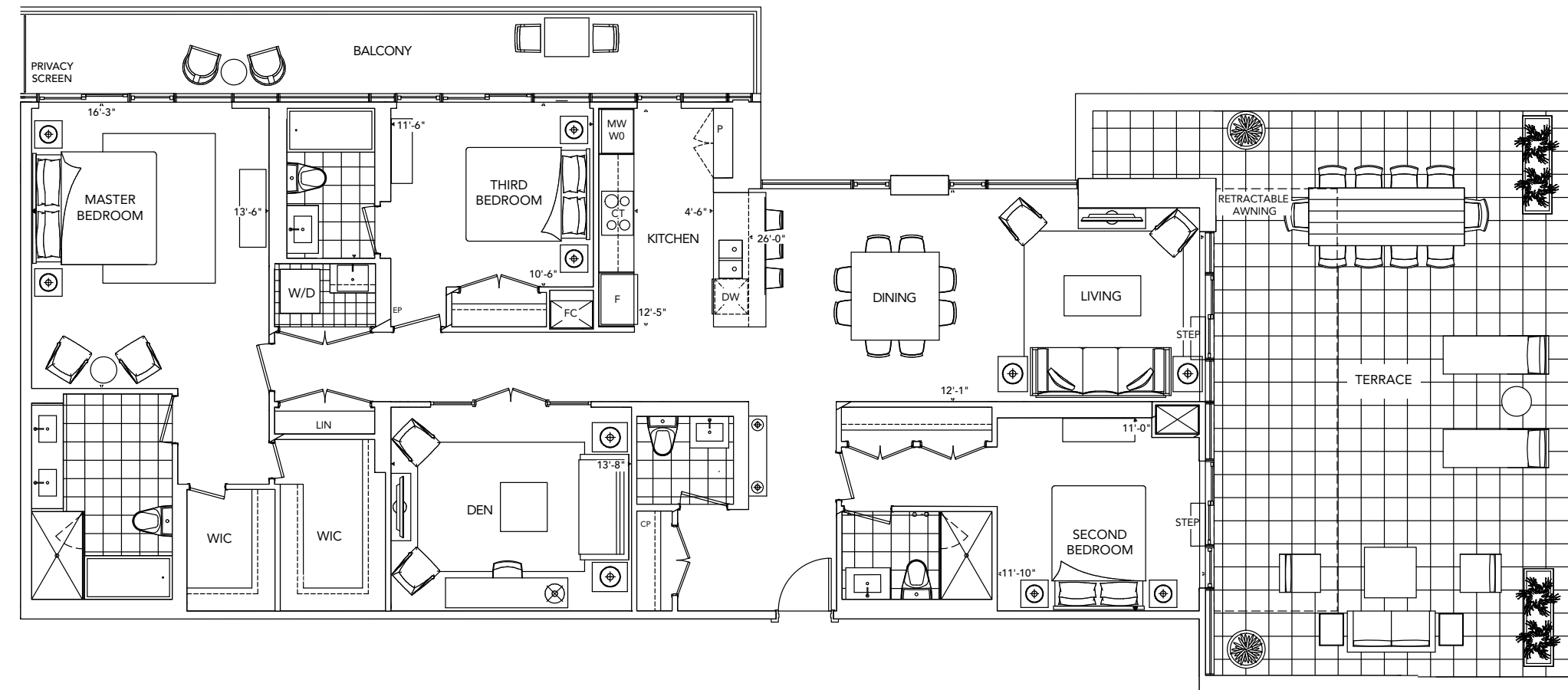


All dimensions are approximate and subject to normal construction variances. Dimensions may exceed the useable floor area. Sizes and specifications subject to change without notice. Furniture is displayed for illustration purposes only and does not necessarily reflect the electrical plan for the suite. Suites are sold unfurnished. E.&O.E. Tridel®, Tridel Built for Life® and Tridel Built Green. Built for Life® are registered trademarks of Tridel and used under license. ©Tridel 2015. All rights reserved. October 2015.

**T1H**

3 Bedroom + Den

20



FACING RAVINE



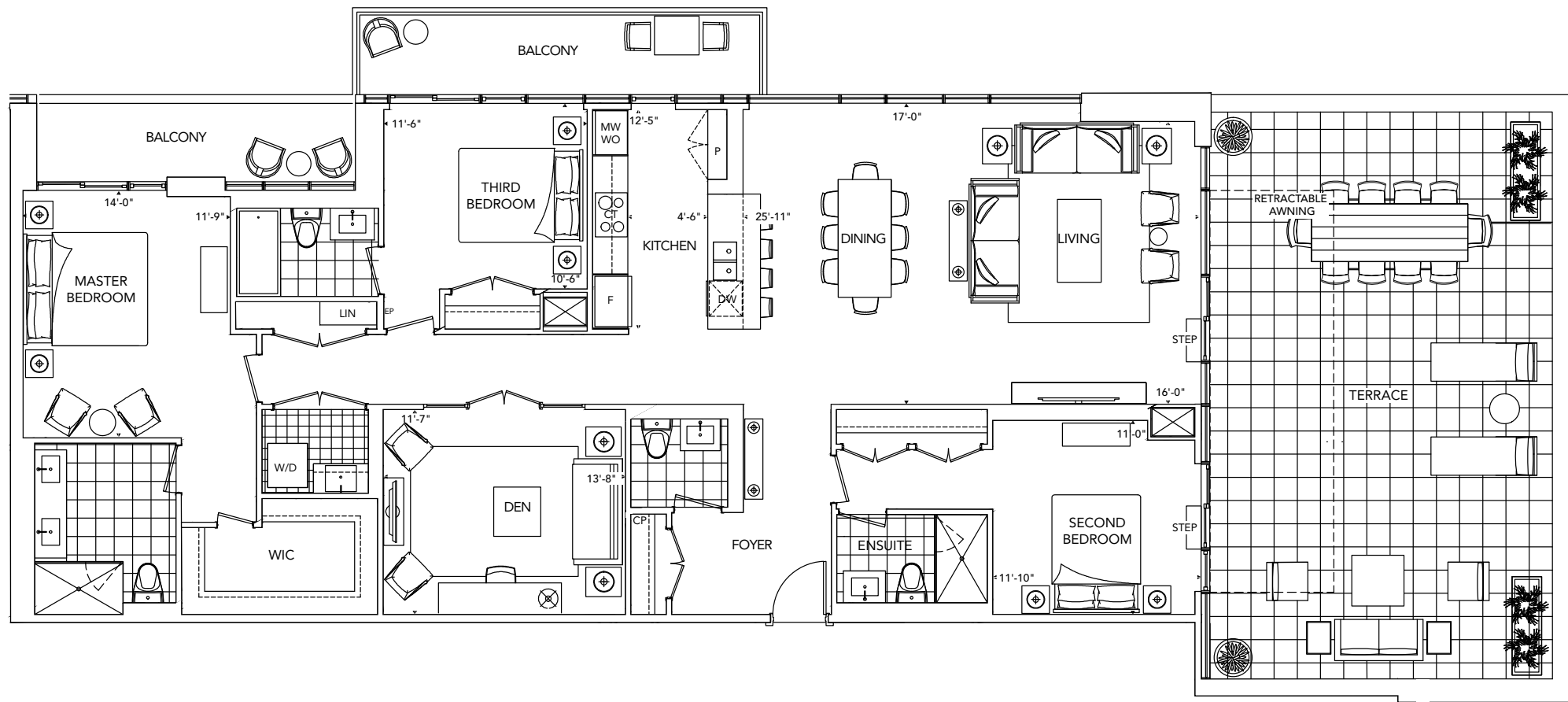
All dimensions are approximate and subject to normal construction variances. Dimensions may exceed the useable floor area. Sizes and specifications subject to change without notice. Furniture is displayed for illustration purposes only and does not necessarily reflect the electrical plan for the suite. Suites are sold unfurnished. E.&O.E. Tridel®, Tridel Built for Life® and Tridel Built Green. Built for Life® are registered trademarks of Tridel and used under license. ©Tridel 2015. All rights reserved. October 2015.

FLOORPLANS

T1B

3 Bedroom + Den

20



All dimensions are approximate and subject to normal construction variances. Dimensions may exceed the useable floor area. Sizes and specifications subject to change without notice. Furniture is displayed for illustration purposes only and does not necessarily reflect the electrical plan for the suite. Suites are sold unfurnished. E.&O.E. Tridel®, Tridel Built for Life® and Tridel Built Green. Built for Life® are registered trademarks of Tridel and used under license. ©Tridel 2015. All rights reserved. October 2015.

FACING RAVINE

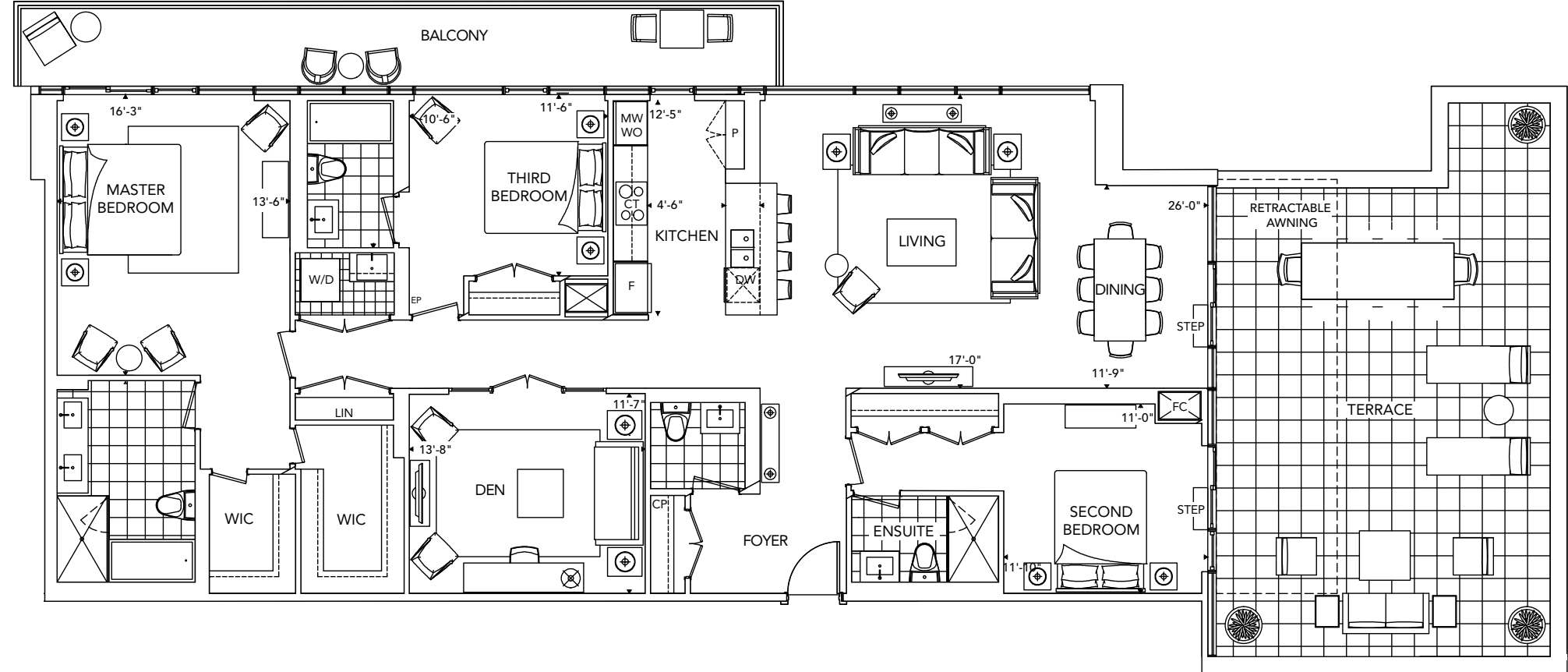


FLOORPLANS

T1E

3 Bedroom + Den

20



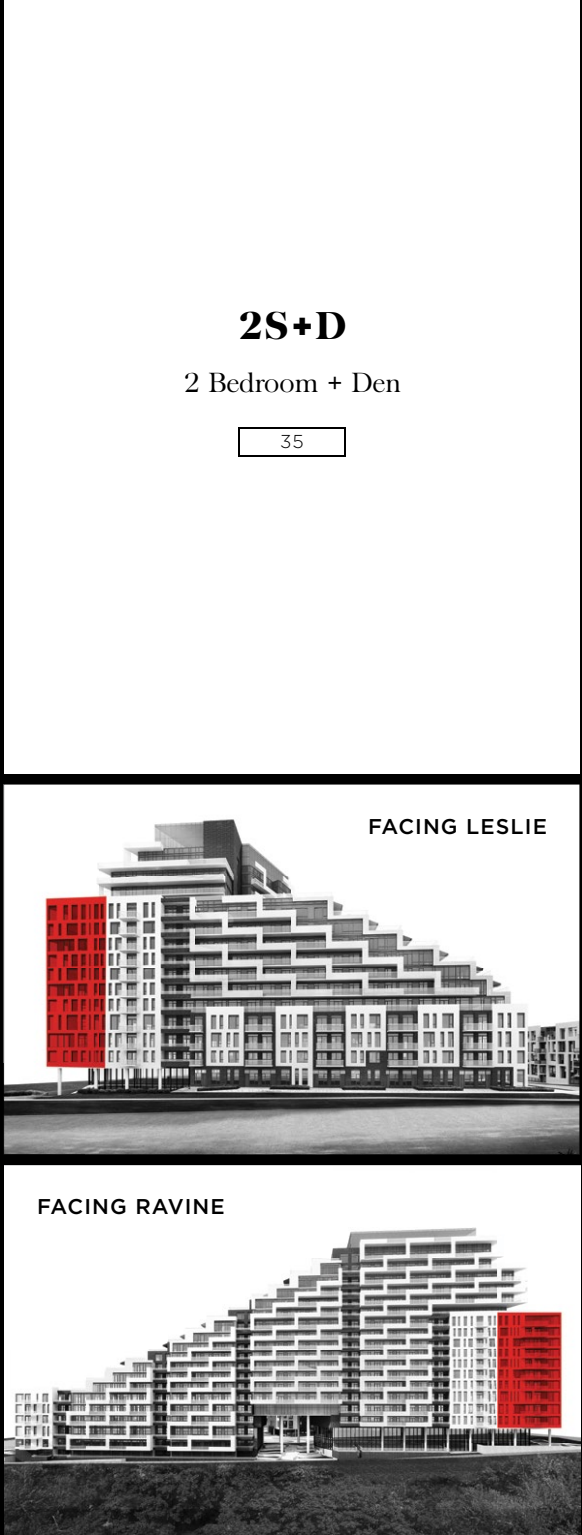
All dimensions are approximate and subject to normal construction variances. Dimensions may exceed the useable floor area. Sizes and specifications subject to change without notice. Furniture is displayed for illustration purposes only and does not necessarily reflect the electrical plan for the suite. Suites are sold unfurnished. E.&O.E. Tridel®, Tridel Built for Life® and Tridel Built Green. Built for Life® are registered trademarks of Tridel and used under license. ©Tridel 2015. All rights reserved. October 2015.

FACING RAVINE





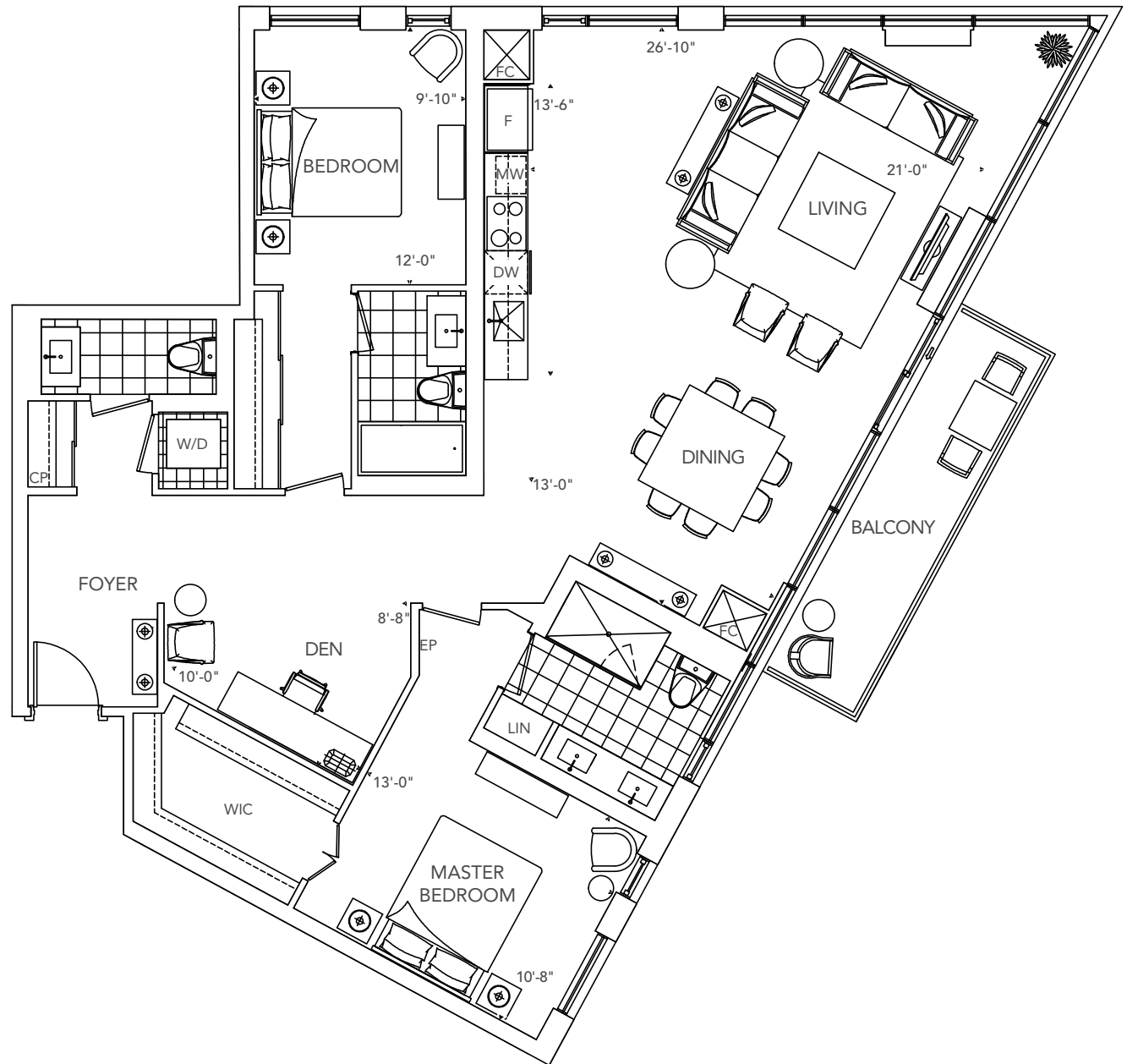
FLOORPLANS



2S+D

2 Bedroom + Den

35



All dimensions are approximate and subject to normal construction variances. Dimensions may exceed the useable floor area. Sizes and specifications subject to change without notice. Furniture is displayed for illustration purposes only and does not necessarily reflect the electrical plan for the suite. Suites are sold unfurnished. E.&O.E. Tridel®, Tridel Built for Life® and Tridel Built Green. Built for Life® are registered trademarks of Tridel and used under license. ©Tridel 2015. All rights reserved. October 2015.

FEATURES & FINISHES



SIGNATURE TERRACE COLLECTION

GENERAL

- Smooth ceiling throughout, painted with a flat latex paint.
- Suites with terraces will feature an exterior gas BBQ connection and/or exterior cold water hose bib.

FLOOR COVERINGS

- Plank engineered wood flooring\*\* in foyer, living room, dining room, study\*, hallway\*, family room\*, bedrooms and kitchen/breakfast\*.
- Choice of 12"x24" marble\*\* or porcelain\*\* tile floor in bathrooms and powder room\*.

KITCHEN

- Signature kitchen cabinetry\*\* with extended-height upper cabinets, full depth fridge upper cabinet, and pantry\*. Cabinets complete with choice of decorative metal hardware\*\*.
- Choice of granite or quartz kitchen countertop and backsplash\*\* with polished double edge and double bowl\* undermount stainless steel sink.
- Architect Series Kitchen Aid Energy Star high efficiency, panel ready dishwasher.
- Architect Series Kitchen Aid Energy Star high efficiency built-in, panel ready approx. 20.5 cubic foot refrigerator with bottom mounted freezer door.
- Built-in recessed high capacity hood fan in stainless steel, vented to the exterior, combined with decorative wood canopy matching cabinetry.
- Architect Series Kitchen Aid 30" cooktop and Architect Series Kitchen Aid built-in combination micro/oven\* tower in stainless steel finish.

BATHROOM(S)

- Marble vanity top\*\* with undermount porcelain sink\*.
- Luxurious 5'6" undermount soaker tub in master ensuite bathroom with tiled skirt\*\* and marble\*\* deck\*\*, complete with deck-mount faucets, full height tiled walls\*\*.
- Choice of 12"x24" marble\*\* or porcelain\*\* tiles in tub\* and shower\* enclosure.
- Frameless glass shower enclosure complete with brushed metal hardware.

COMFORT SYSTEM

- 4 pipe vertical fan coil heating and air conditioning system, complete with integrated heat recovery ventilator providing fresh air and heat recovery with the exception of suites 2R+M and 2S+D which will receive 2 pipe.

LAUNDRY

- Side-by-side Whirlpool front loading dryer and Whirlpool Energy Star high efficiency front loading washer (complete with stainless steel flexible hose water connections). Appliances are white in colour. Stacked washer and dryer where indicated on plan.

COMMUNICATIONS

- Fiber optic cabling to each suite (complete with in-suite junction box with optical media converter).
- Coaxial cable and Category 5e twisted pair in-suite wiring to living room, study (if applicable) and bedroom(s).
- Bulk internet service: Hybrid Fibre 250 High-Speed internet service (including Rogers Advanced Wi-Fi modem) with download speed up to 250 Mbps and upload speed up to 20 Mbps, with unlimited usage. Note: speed may vary with internet traffic, server gateway/router, computer (quality, location in the suite, software and applications installed, suite wiring, home network and/or others factors). Cost of this service is included in the condominium's maintenance budget.

\* denotes availability determined by suite design.  
\*\* denotes finishes to be selected from the vendor's samples.

All features and finishes subject to change without notice. Illustrations are artist's concept only. Building and view not to scale. Tridel®, Tridel Built for Life®, Tridel Built Green. Built for Life® are registered trademarks of Tridel and used under license. ©Tridel 2015. All rights reserved. E.&O.E. October 2015.